

Agenda Item:

# Joint Public Health Board

10
----

Bournemouth, Poole and Dorset councils working together to improve and protect health

Date of Meeting	8 May 2014
Officer	Director of Public Health
Subject of Report	<b>Public Health Performance Monitoring 2013/14</b>
Executive Summary	<p>At the Joint Public Health Board on 4 February 2014 a set of public health outcome indicators was reported; an updated version with the most recent data as at April 2014 is presented in appendix 1, including more timely quarterly figures where available.</p> <p>Monitoring has also been divided up to be clear about those areas where the authorities have a mandatory responsibility, and areas where the focus is on the strategic development or other new development areas. Commentary on individual areas and related budget where appropriate, is also now included in the report.</p> <p>The report continues to show good progress in most areas. The Health Checks programme is now firmly launched and activity in Bournemouth and Poole is greater than for the previous year. Specific work on smoking in pregnancy also continues.</p>
Impact Assessment:  <i>Please refer to the <a href="#">protocol</a> for writing reports.</i>	Equalities Impact Assessment: Not applicable as this is not a new policy or strategy
	Use of Evidence: This report has been compiled from the latest release (February 2014) of the Public Health Outcome Framework Indicator set and related national data sets.
	Budget: There are no direct budgetary implications of this report.
	Risk Assessment: Having considered the risks associated with this decision using the Council's approved risk management

	<p>methodology, it is the officer’s opinion that there are no High risks that need to be reported.</p>
	<p>Other Implications:</p>
Recommendation	<p>That the Board consider and comment upon the indicators setting out the latest known position for Public Health Dorset.</p>
Reason for Recommendation	<p>Monitoring of key indicators is an essential requirement to understand the impact of services and identify where to focus resources most efficiently and effectively to make a difference to the health of the local population.</p>
Appendices	<p>Appendix 1 – Public Health Performance Indicators</p>
Background Papers	<p>Public Health Business Plan Public Health Performance Indicators – 7 November, 4 February</p>
Report Originator and Contact	<p>Name: Jane Horne, Consultant in Public Health Tel: 01305-225872 Email: j.horne@dorsetcc.gov.uk</p>

## **Public Health Dorset**

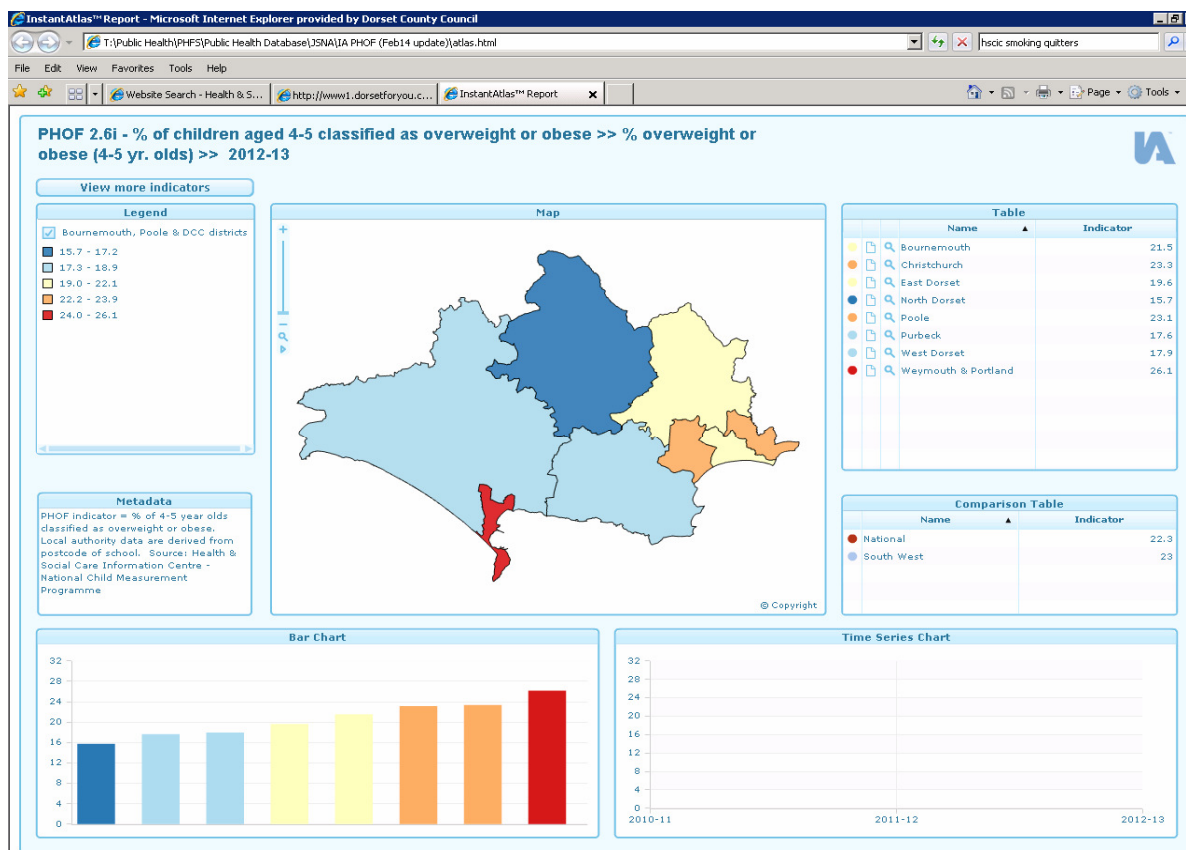
### **1. Introduction**

- 1.1 The Joint Public Health Board considered an initial set of public health performance indicators at their meeting on 7 November 2013 and an amended version on 4 February 2014 in relation to the mandatory and core programmes and national public health outcomes. Appendix 1 provides an update of the February version, highlighting those areas where there has been more recent data released and with updated commentary.
- 1.2 There continue to be issues with availability of timely data at a more local level. This is in part due to changes in the ownership of key data from 1<sup>st</sup> April 2013, as well as changes in legislation around data sharing.
- 1.3 Also at the February meeting the Director of Public Health agreed to provide information in different formats for the next meeting to provide a fuller picture, and an interactive presentation will be presented at the meeting. In the meantime some screen shots showing maps at differing levels are attached on pages 4-6. The Public Health Dorset Instant Atlas update will be available online once technical issues with the website can be resolved.
- 1.4 The overall picture for key indicators for the three authorities continues to compare well to the national picture. Issues include:
  - Health Checks (offer) – There has been an increase in offers in both Bournemouth and Poole although this has not yet been seen in Dorset. Quarter four data for 2013/14 is provisional but suggests there will be a slight improvement for Dorset County on last year. Uptake however remains high and importantly is good in deprived areas. A media campaign has been started and alternative provider options are being considered to expand the offer.
  - Smoking in pregnancy – In 2012/13 Dorset compared unfavourably with England. Issues with data reporting have seen delays in more up to date information and this is only being reported at CCG level, to England. Public Health Dorset are working with the CCG, midwives and smoking cessation providers to develop an improved approach to identifying these women and ensuring they are able to access smoking cessation services.
- 1.5 Public Health Dorset will continue to monitor local performance whilst building an improved understanding of the detail underpinning the local picture relating to performance against national outcomes, to enable us to target resources, and consider costs, benefits and value for money.

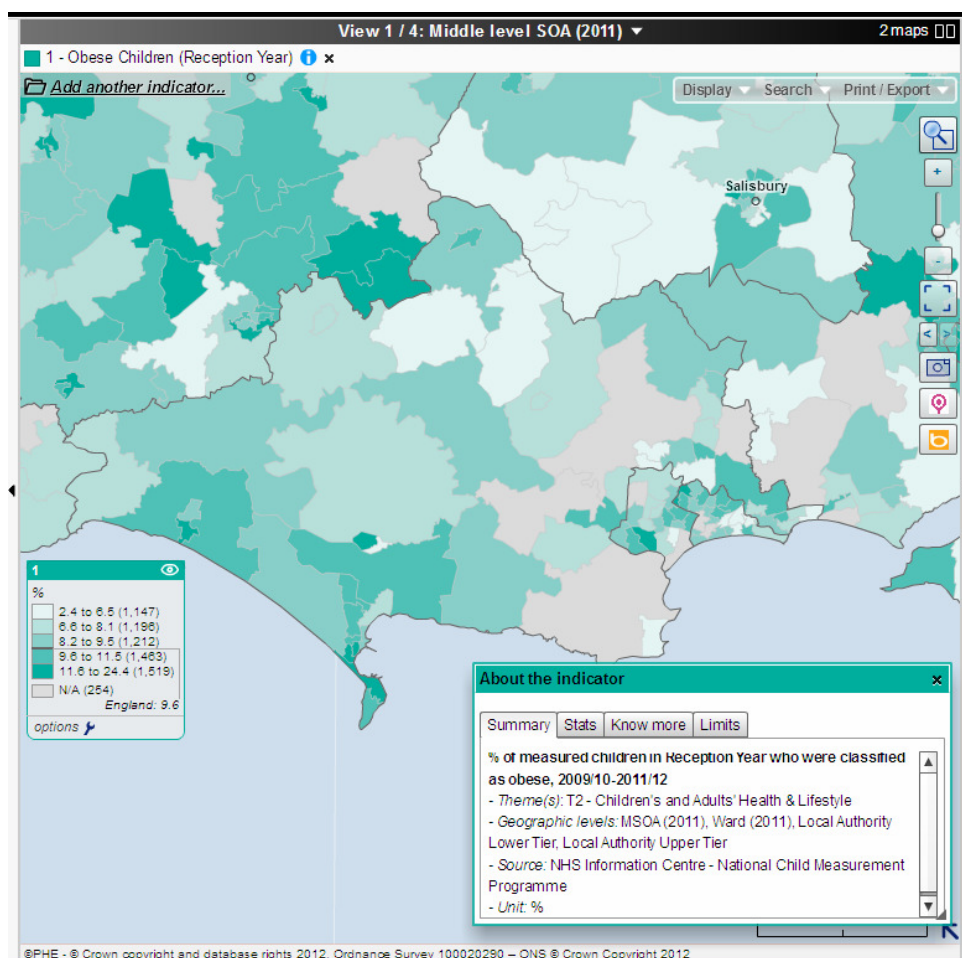
**Dr David Phillips**

Director for Public Health

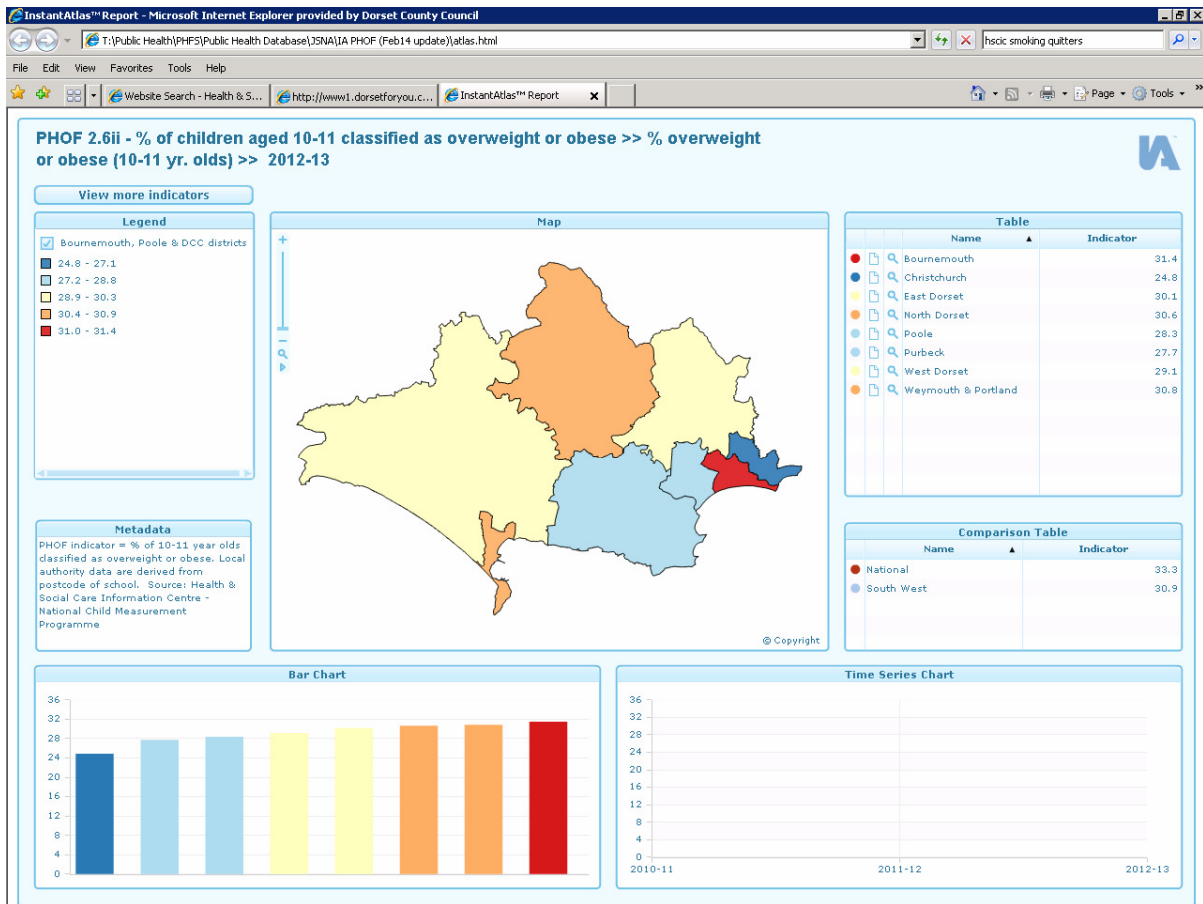
April 2014



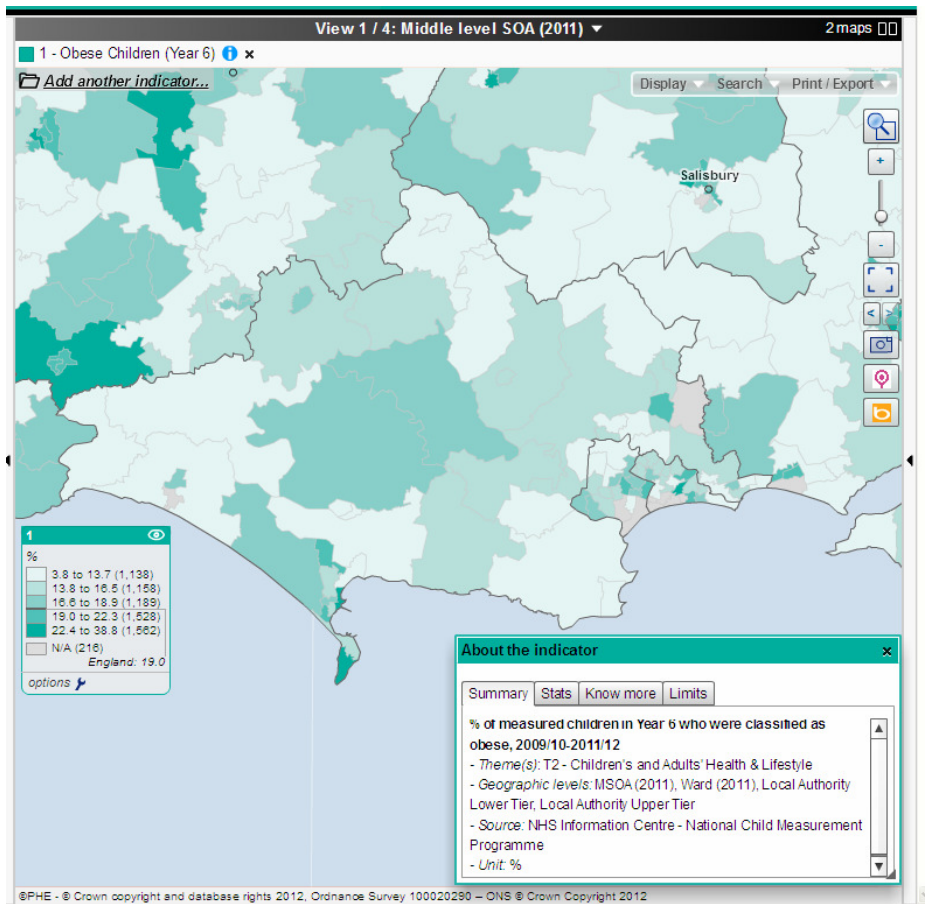
Source: Public Health Dorset Instant Atlas update Feb 2014



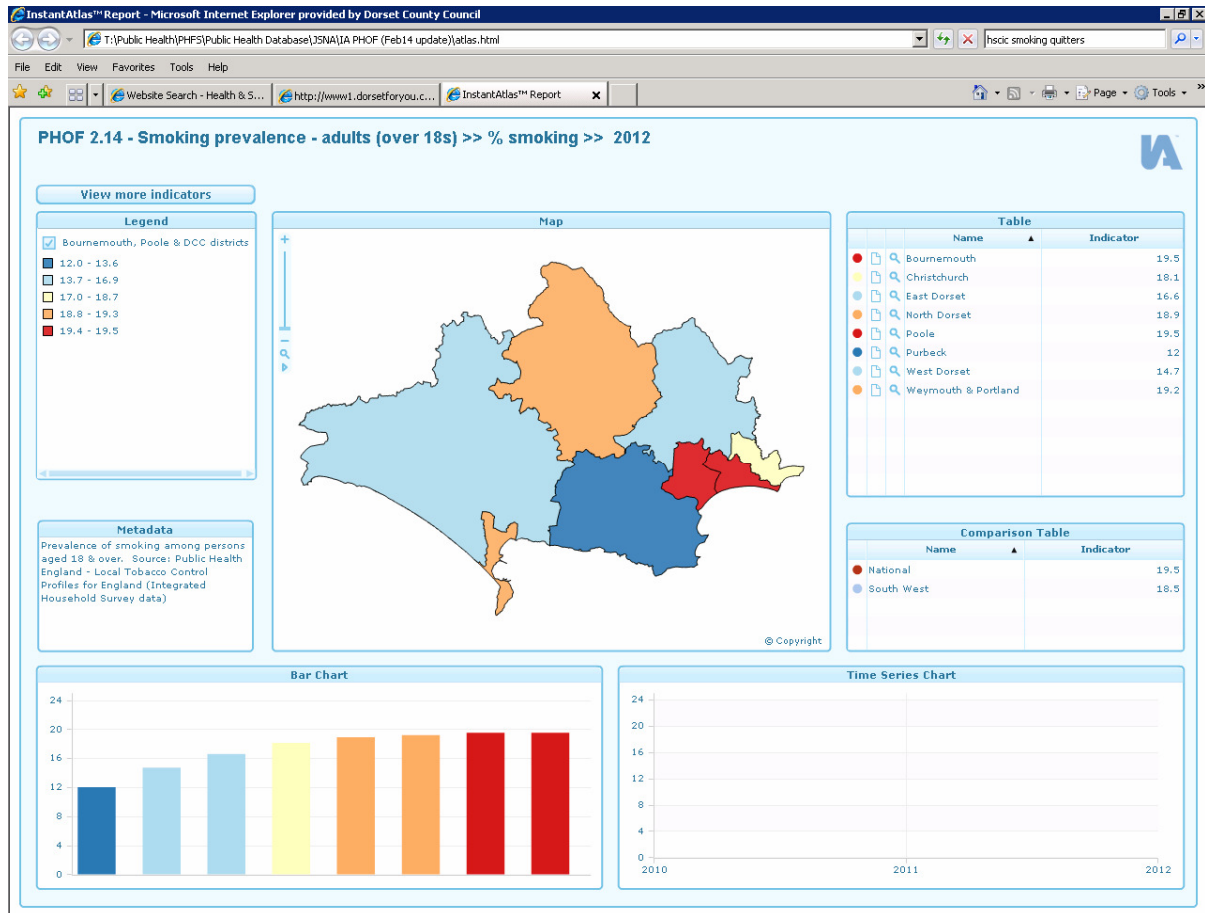
Source: Public Health England, Local health: <http://www.localhealth.org.uk>



Source: Public Health Dorset Instant Atlas update Feb 2014



Source: Public Health England, Local health: <http://www.localhealth.org.uk>



Source: Public Health Dorset Instant Atlas update Feb 2014